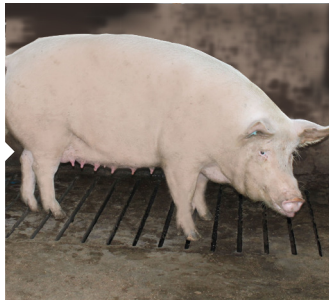


Exclusive Dry Sow & Boar



Klas: Droë Sog en Beer / Class: Dry Sow and Boar

V22342

Voedingstof	Eenheid / Unit		Nutrient
Proteïen (Min)	120	g/kg	Protein (Min)
Lisien (Min)	5.0	g/kg	Lysine (Min)
Metionien (Min)	2.0	g/kg	Methionine (Min)
Vog (Maks)	120	g/kg	Moisture (Max)
Vet (Min)	25	g/kg	Fat (Min)
Vesel (Maks)	80	g/kg	Fibre (Max)
Kalsium (Min/Maks)	7.0-12.0	g/kg	Calcium (Min/Max)
Fosfor (Min)	6.0	g/kg	Phosphorus (Min)
Sout (Maks)	5.0	g/kg	Salt (Max)

PRODUKTESKRYWING / PRODUCT DESCRIPTION

'n Volledige droë sog- en beervoer bedoel om goeie fetus-ontwikkeling te verseker, terwyl daar terselfdertyd op die instandhouding van die ideale liggaamssamestelling gekonsentreer word. Ook 'n volledige voer vir aktiewe bere.

A complete feed for dry sows to ensure good fetal development while at the same time maintaining the ideal sow body composition. Also a complete feed for working boars.

VOERINSTRUKSIES / FEEDING INSTRUCTIONS

Voer droë sôe vanaf spening tot jonging. Pas die hoeveelheid voer aan ten einde die vereiste liggaamskondisie vir jonging te verkry. Voer bere 2,0 - 2,5 kg per dag, afhangende van hulle liggaamsgrootte, kondisie en werktempo. Voeders moet altyd skoon gehou word en vars water moet ten alle tye beskikbaar wees.

Feed dry sows from after weaning until farrowing. Adjust the feeding level to achieve the desired body condition required at farrowing. Feed boars 2,0 - 2,5 kg per day depending on body size, condition and work rate. Feeders must always be kept clean and water must be available at all times.

AANBEVOLE INNAMES / RECOMMENDED INTAKE

Sôe 1,8 - 2,5 kg per dag, afhangende van hul liggaamskondisie. Bere 2,0 - 2,5 kg per dag, afhangende van die liggaamsgrootte, kondisie en werktempo.

Sows 1,8 - 2,5 kg per day depending on body condition. Boars 2,0 - 2,5 kg per day depending on body size, body condition and work rate.

For more information and technical advice on any of De Heus's pig products and other nutritional aspects, contact your nearest De Heus mill, sales manager or technical advisor.

Head Office Tel: 031 785 1575 • www.deheus.co.za

E-mail: infosa@deheus.com